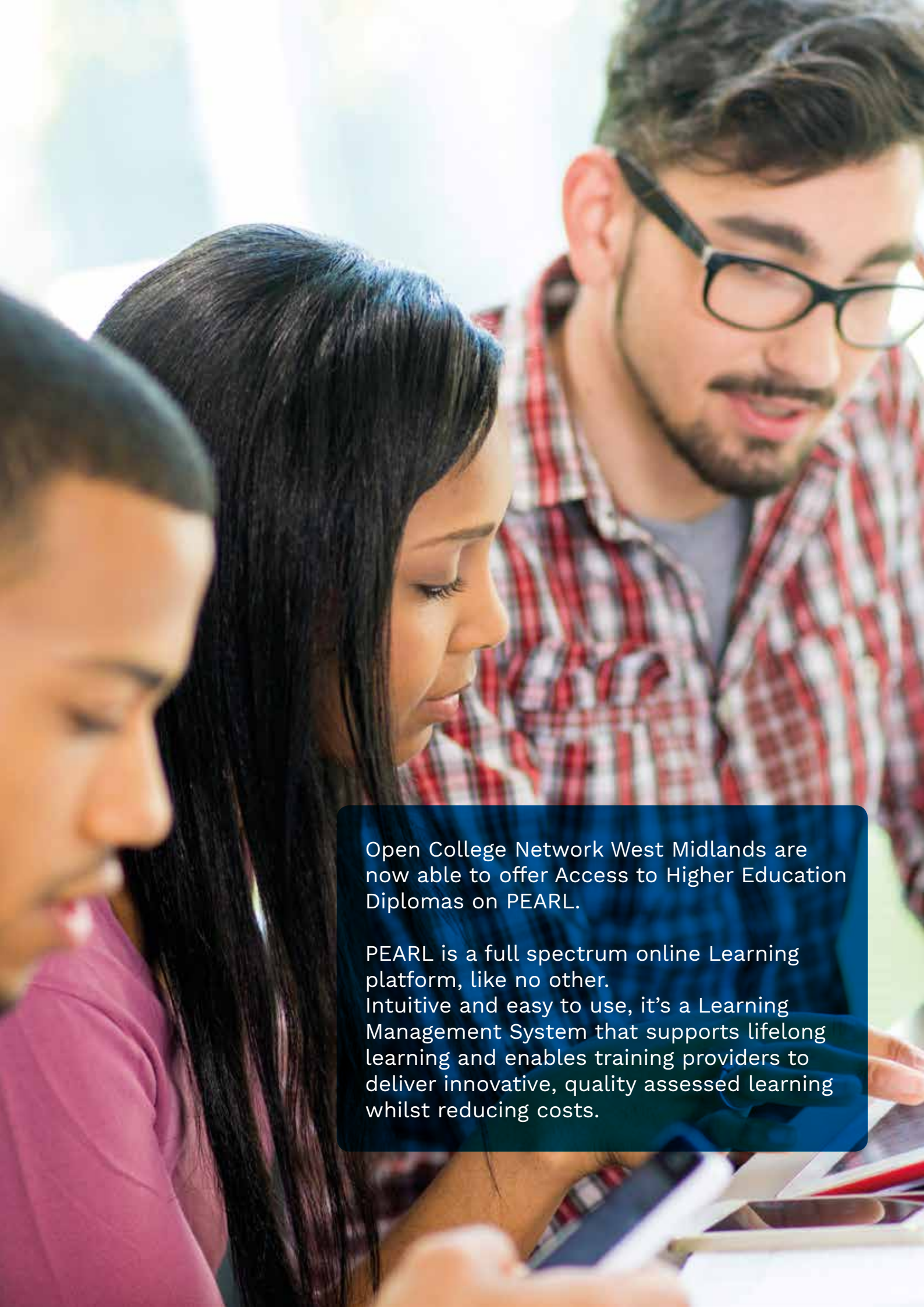


Innovative. Personalised. Responsive.
Online learning has
changed forever.



Open College Network West Midlands are now able to offer Access to Higher Education Diplomas on PEARL.

PEARL is a full spectrum online Learning platform, like no other. Intuitive and easy to use, it's a Learning Management System that supports lifelong learning and enables training providers to deliver innovative, quality assessed learning whilst reducing costs.

Introducing PEARL

PEARL brings together all that is good about online learning allowing training providers delivering Access to Higher Education Diplomas awarded by Open College Network West Midlands, to focus tutor resources more effectively on the needs of learners.

PEARL helps learners achieve recognised Access to Higher Education Diplomas from home, on the move or in the workplace.

Learners are centre stage throughout their learning journey. PEARL is developed in the UK and constantly updated, with learners, training providers, awarding bodies and Ofqual in mind at all times.

PEARL is more than just another Learning Management System

Benefits

- Rich interactive learning content mapped to regulated qualifications
- Collaborative “social” learners are engaged creating and sharing additional resources
- Unique online technology assisted e-assessments for competency and knowledge-based assessment
- Delivers significant cost savings while increasing learner engagement
- Incentives to motivate and encourage learners
- Dashboards to track learners and tutors at the click of a button.

Features

- Cloud based scalable Virtual Learning Environment (VLE)
- E-portfolio System: all portfolios and assignments kept online
- Virtual Assessment Strategies including video evidence
- Learner Tracking, Reporting and Management System
- Initial Assessment Diagnostic Tool: supports IAG
- Learners can customise their learning journey
- Easy Course Creator Software
- Advanced Learner Loans (or other SFA funding) Enrolment and Administration tool
- Learner can communicate with peers and tutors
- No setup costs.



Open College Network West Midlands

Open College Network West Midlands is a national Awarding Organisation, regulated by Ofqual, the Welsh Government and the Quality Assurance Agency for Higher Education (QAA), to develop and award nationally recognised qualifications.

Working in partnership with employers, training providers, colleges, universities, schools and community organisations, Open College Network West Midlands is a leading Access Validating Agency (AVA) in the UK in awarding Access to Higher Education Diplomas.

Why people choose Open College Network West Midlands

- Development support for new Access to Higher Education Diplomas
- Access to a bank of approved units across a range of curriculum areas which can be supplied individually
- All Access to Higher Education Diploma courses and units are provided on PEARL
- A course recognition process based on the process of peer review involving expert cross-sector practitioners
- Effective and supportive quality assurance through external moderation (enabled remotely through PEARL) and regional standardisation
- An efficient registration and awards process
- On-going curriculum support and responsive updates
- High value and competitively priced
- A long-standing and leading AVA with a low risk rating from QAA.

Access to Higher Education Diplomas

Access to Higher Education Diplomas prepare learners for entry into Higher Education. They are designed for those who would like to attend University, or College and study at Level 4, but have not got the right qualifications.

Courses can be studied for 1 year (full-time) or 2 years (part-time). Open College Network West Midlands qualifications, offered on PEARL, allow students to fit their study around their home

and work commitments as they can choose when and where they want to access their study materials and assignments. All they need is a PC, phone or tablet with WiFi access.

Studying an Access to Higher Education Diploma leads to a national qualification, which is accepted as a standard entry qualification by most universities in England and Wales.



**Open College Network
West Midlands is an
Awarding Organisation
committed to meeting the
training and development
needs of individuals,
employers and communities.**

Tailored Access to Higher Education Diplomas

Now you can develop tailored Access to HE Diploma delivery for your learners, to increase their chances of success and make best use of your resources.

PEARL contains ready made Access to HE Diplomas. Each diploma fulfils the necessary approved rules of combination and have Open College Network West Midlands approved content and assessment methodologies.

There's now, however, a new way to compliment course delivery, to help get more learners to University. Now you can select the units that compliment your learning programme, so you can blend your classroom teaching with the PEARL online learning experience.

Using PEARL to tailor your delivery

PEARL contains over 80 Access to HE Diploma units that are designed for remote delivery. You can use PEARL to deliver individual Access to HE Diploma units to your learners in unsupervised study time. This enables you to re-purpose valuable teaching time and resources to focus on areas where they'll deliver the most value.

This flexibility gives you the best of both worlds, enabling you to now design the most efficient blended Access to HE Diploma delivery possible.

Custom made courses

When designing Access to Higher Education Diploma programmes significant research was undertaken to ensure unit selections gave learners the best possible chance of getting to their institution of choice. Pathways have been developed to describe alternative unit selections for each diploma which lead to a subject specialism at University or College.

Access to HE Diplomas

- Education
- Health
- Medicine and Healthcare Professions
- Science
- Social Science
- Social Science and Health
- Social Science and Humanities
- Social Work

Access to HE Diplomas (Health)

Access to HE Diplomas (Health) can cover a broad range of subjects. Learners use this Diploma to get into disparate fields, such as Midwifery and Health Studies. Higher Education entry requirements for a Midwifery degree, compared to a Health Studies degree, point to different unit selections. Up to five separate pathways have therefore been created to provide more targeted routes.



Option 1 Traditional

Health General

- Classroom based learning
- Units pre-selected

PEARL delivers:

- Increased learner engagement. Units can be more relevant to a chosen field of study.
- Increased choice of Access to HE Diplomas.
- Flexible learning

Option 2 Learning on PEARL

Health General

- PEARL based learning
- Units pre-selected

Nursing

- PEARL based learning
- Units pre-selected, targeted to a career in Nursing

Midwifery

- PEARL based learning
- Units pre-selected, targeted to a career in Midwifery

Option 3 Blended Learning

Health General

- Blended learning, classroom and PEARL
- Units can be selected to give greater choice to learners
- Optimise teaching hours
- Improve learner engagement

There are 32 Units currently on PEARL relating to Access to HE Diploma (Health)

ACCESS TO HE DIPLOMA (HEALTH) UNITS ON PEARL

- | | | |
|---|--|---|
| <ul style="list-style-type: none"> ➤ Human Nutrition and the Digestive System ➤ Human Reproduction, Growth and Development ➤ The Human Musculo-Skeletal System ➤ Cell Biology ➤ Human Immunity ➤ Cell Metabolism ➤ The Human Endocrine & Nervous System ➤ Cell Division & Heredity ➤ The History of the National Health Service ➤ The Roles and Responsibilities of Health Care Professionals | <ul style="list-style-type: none"> ➤ Contemporary Health Issues ➤ Inequalities in Health & Illness ➤ Approaches to Health ➤ Equality & Diversity within Health Care ➤ The Brain & Nervous System ➤ Introduction to Cognitive Psychology ➤ Developmental Psychology ➤ Psychology of Mental Illness ➤ Abnormal Psychology ➤ Social Factors in Health Care ➤ Introduction to Sociology ➤ Poverty & Health | <ul style="list-style-type: none"> ➤ Sociology of Health ➤ Sociology of the Family ➤ Sociology of Education ➤ Sociology of the Mass Media ➤ Understanding Crime & Deviance ➤ Academic Writing Skills ➤ Independent Research ➤ Preparing a Written Assignment ➤ Preparing to Study ➤ Progressing to Higher Education |
|---|--|---|



Benefits of using PEARL for Access to Higher Education Diploma delivery

- Awarding body endorsed content
- Awarding body endorsed assignments
- Robust assessment methodologies utilising a range of evidence types including audio visual
- Bespoke unit selections for each Diploma, that are awarding body endorsed, to suit popular learner progression routes
- True blended learning – provide optimum balance of classroom and remote delivery to suit learners
- Bespoke Access to Higher Education Diploma IAG
- Tools to help learners engage with universities
- Assessor module
- Assessor management system – monitor in real-time your assessor performance
- Performance Management system – monitor in real-time your learner performance.

Information, Advice & Guidance (IAG)

Access to HE Diplomas are very powerful. They are an efficient gateway through which learners can get access to University. Whilst learners are aware of this, they are not always aware of how to get the most out of their qualification. PEARL addresses IAG in several ways.

Common problems

- Diploma isn't accepted for a particular degree
- Not enough credits in a certain academic subject
- Not enough merits or distinctions in certain academic subjects.

PEARL provides IAG:

- Content and signposting
- Letter templates
- Diploma specification templates that learners can send to University admission departments.

PEARL doesn't simply leave success to chance and ask learners to declare they understand how to get the most out of their Access to HE Diploma. PEARL ensures that learners produce evidence that they have actually done this work. In this way, PEARL can help maximise a learners chances of success and progression.

PEARL solutions

PEARL has created a response to these challenges. Any learner undertaking their entire Diploma in PEARL undertakes an IAG unit before they start any Graded or Ungraded units that contribute towards their Diploma result. They also have to pass the unit before they are allowed to start submitting assignments to their assessor. This IAG unit is assessed, it really is a mini course in how to get the most out of your Diploma. Learners have to produce evidence that:

- They've contacted admissions departments of universities, whose degrees they want to do, to check their unit selections meet entrance criteria.
- They've practised their personal statement to go on their UCAS form.
- Considered the financial implications of going to university and that they are starting to prepare for this.
- They have researched future career ambitions and how they relate to their chosen degree.



Achievement	Date
15 Timely Submissions 15 assignments on time	11.05.2016
14 Timely Submissions 14 assignments on time	08.04.2016
13 Timely Submissions 13 assignments on time	15.03.2016

For Providers

PEARL increases learner engagement, connects you with employers, reduces administration and saves you money. It's an end-to-end solution covering every aspect of the learning journey.

It is a system which enables users to build a comprehensive library of resources which can be continually reused and updated.

Cloud based and scalable

You won't need to install software. PEARL covers all bases:

- User friendly content creator
- E-Portfolio system
- Dashboards for learner tracking
- No set-up fees
- Over 300 ready-made courses
- Easy to use reporting and dashboards.

An end-to-end solution

Learners can create profiles visible by peers, tutors and potential employers:

- Badges and awards create useful motivational tools to promote learner progression
- Learners like PEARL and it gives you more opportunities to address their needs.

Save time, resource and money

Use your training resources more efficiently. Upload lessons to PEARL and use your tutor or assessor resource more effectively by:

- Using your training resource where its needed most
- Storing all learning materials and evidence are stored in one place
- Reducing your administrative burden
- Viewing learner progress at a glance.

Quality Assurance

PEARL doesn't compromise on quality:

- Evidence learning using digital signatures, and webcam
- Detailed cross referencing system
- All learner contact time is recorded
- Maps learning aims to ILP
- Easy sampling of assignments for IQAs and EQAs.



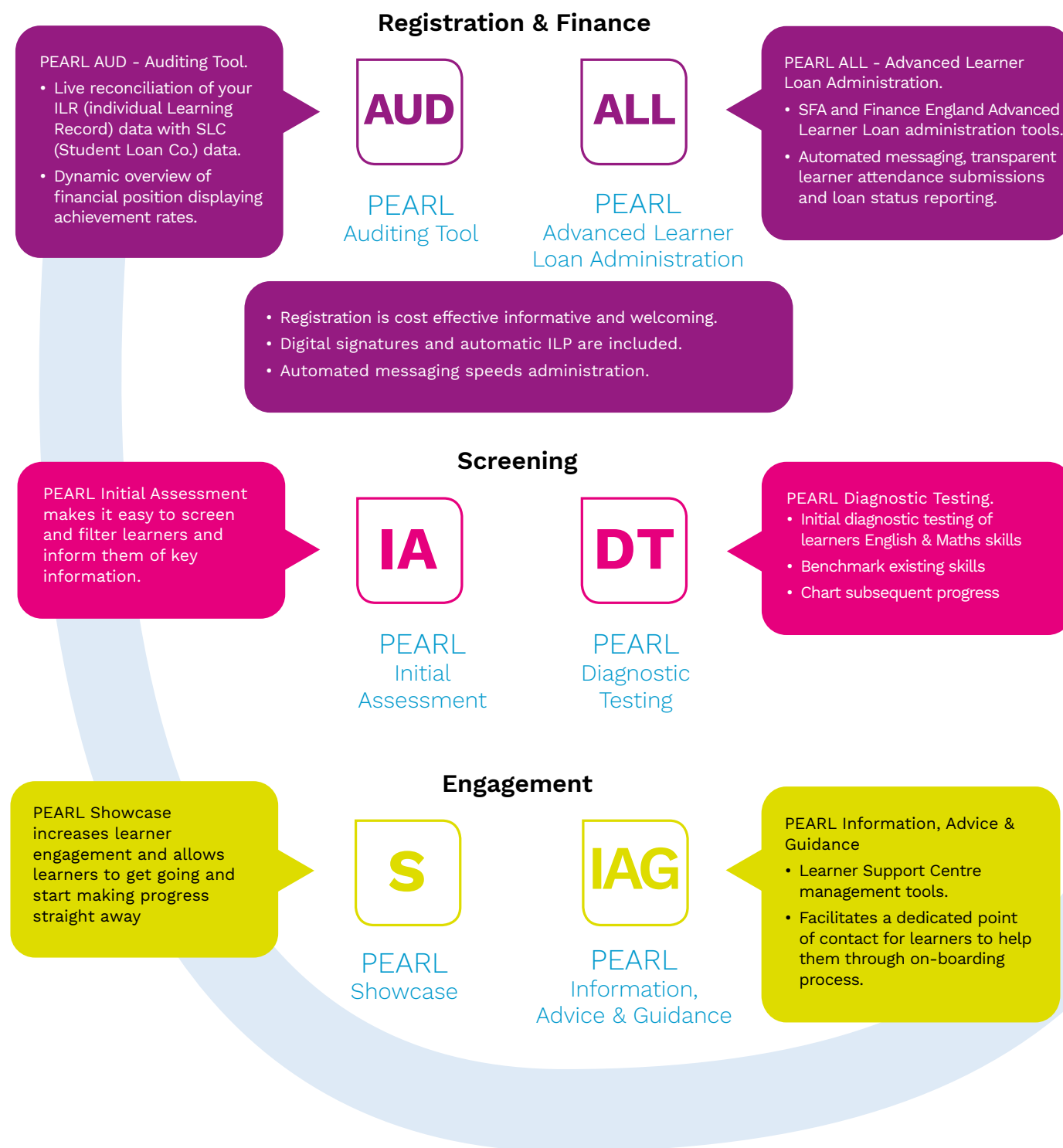
For Employers

The Career Exchange is linked to PEARL. Learners can create separate employer profiles and allow them to see their learning progress. A talent pipeline lets employers spot local talent and request a connection.

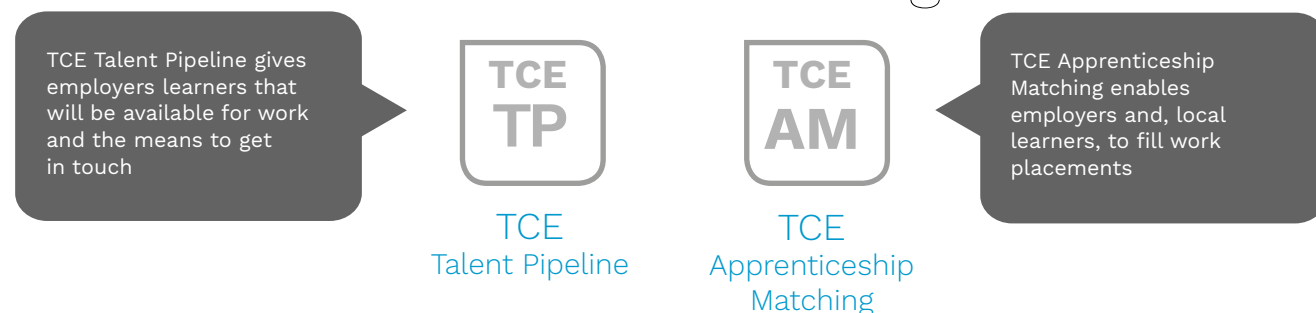
The Career Exchange can be white labelled. Over 150 CPD courses are included as an incentive to employers and learners. Work vacancy advertising is free and it can be used as a recruitment tool. Employers can monitor staff CPD.



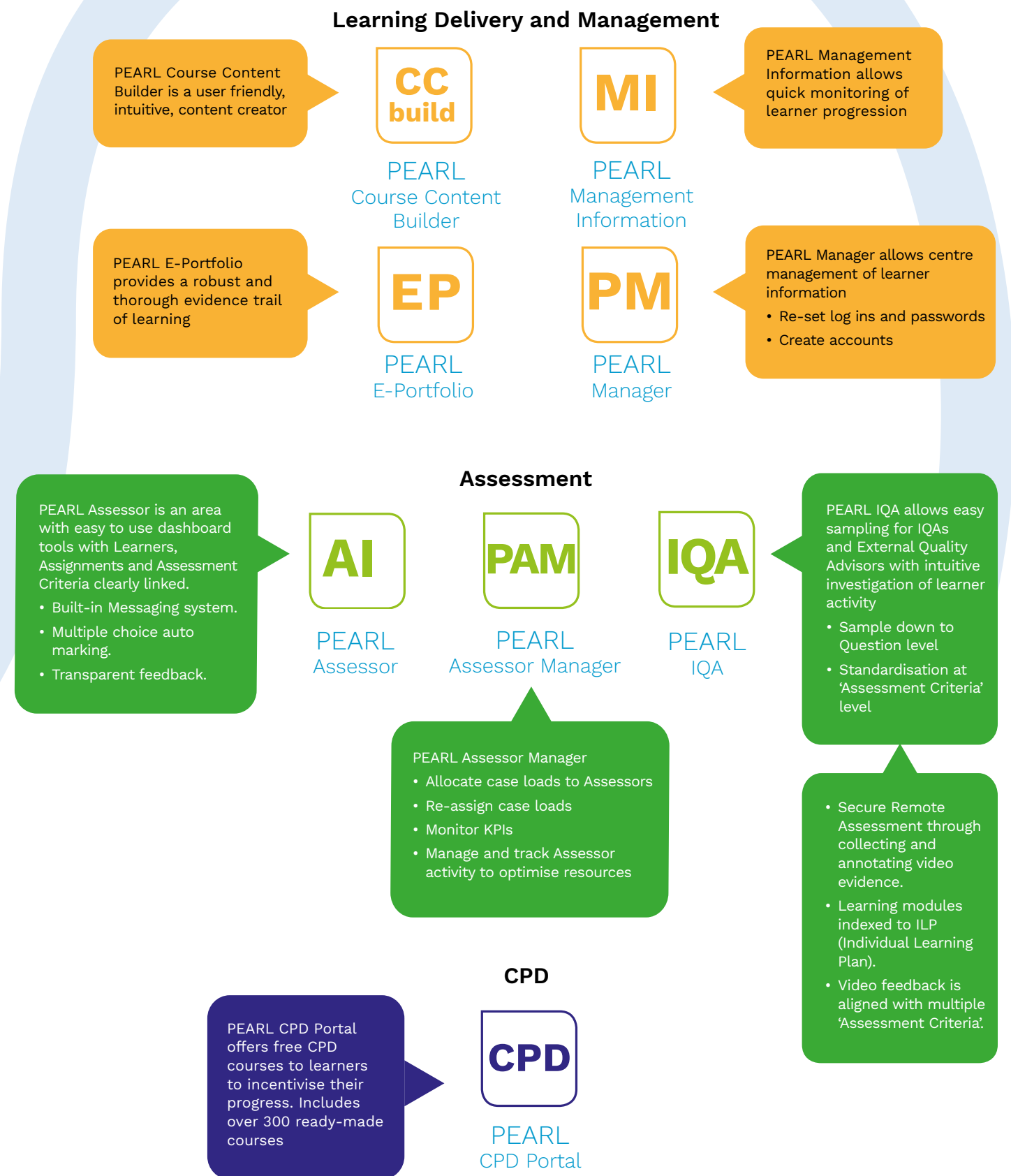
PEARL Learner Registration and Enrolment



The Career Exchange



PEARL Educator



Access to HE Diplomas eligible for Advanced Learner Loans

Open College Network West Midlands is the Access Validating Agency for all the Access to HE Diplomas on PEARL.



Access to HE Diploma (Education)

Pathways:

- General ➤ Teaching English ➤ Teaching Science
- Early Years ➤ Teaching and Learning



Access to HE Diploma (Health)

Pathways:

- General ➤ Nursing ➤ Midwifery



Access to HE Diploma (Medicine and Healthcare Professions)

Pathway:

- Medicine and Healthcare Professions



Access to HE Diploma (Science)

Pathways:

- Health and Medical Science ➤ Biological Science
- Natural Science



Access to HE Diploma (Social Science)

Pathways:

- Psychology and Sociology ➤ Psychology with Criminology



Access to HE Diploma (Social Science and Health)

Pathway:

- Social Science and Health



Access to HE Diploma (Social Science and Humanities)

Pathway:

- Social Science and Humanities



Access to HE Diploma (Social Work)

Pathway:

- Social Work

Can't see what you're looking for? Please get in touch.



Demand PEARL

No need for sales people visiting you (although they will if you like).

No setup or contracts fees.

You only pay for the number of learners that use the system.

Book an online demo today

e: contactus@eppearl.co.uk

t: 0203 239 8023

or online at:

www.eppearl.co.uk/demo





Pearltech UK Limited

www.epearl.co.uk



contactus@epearl.co.uk



[@pearlplatform](https://twitter.com/pearlplatform)



www.facebook.com/PearlPlatform/



0203 239 8023

Open College Network
West Midlands

www.opencollnet.org.uk



wolverhampton@opencollnet.org.uk



[@OpenCollNet](https://twitter.com/OpenCollNet)



[www.facebook.com/AccessToHEat
OpenCollegeNetworkWestMidlands](https://www.facebook.com/AccessToHEatOpenCollegeNetworkWestMidlands)



0190 262 4230

